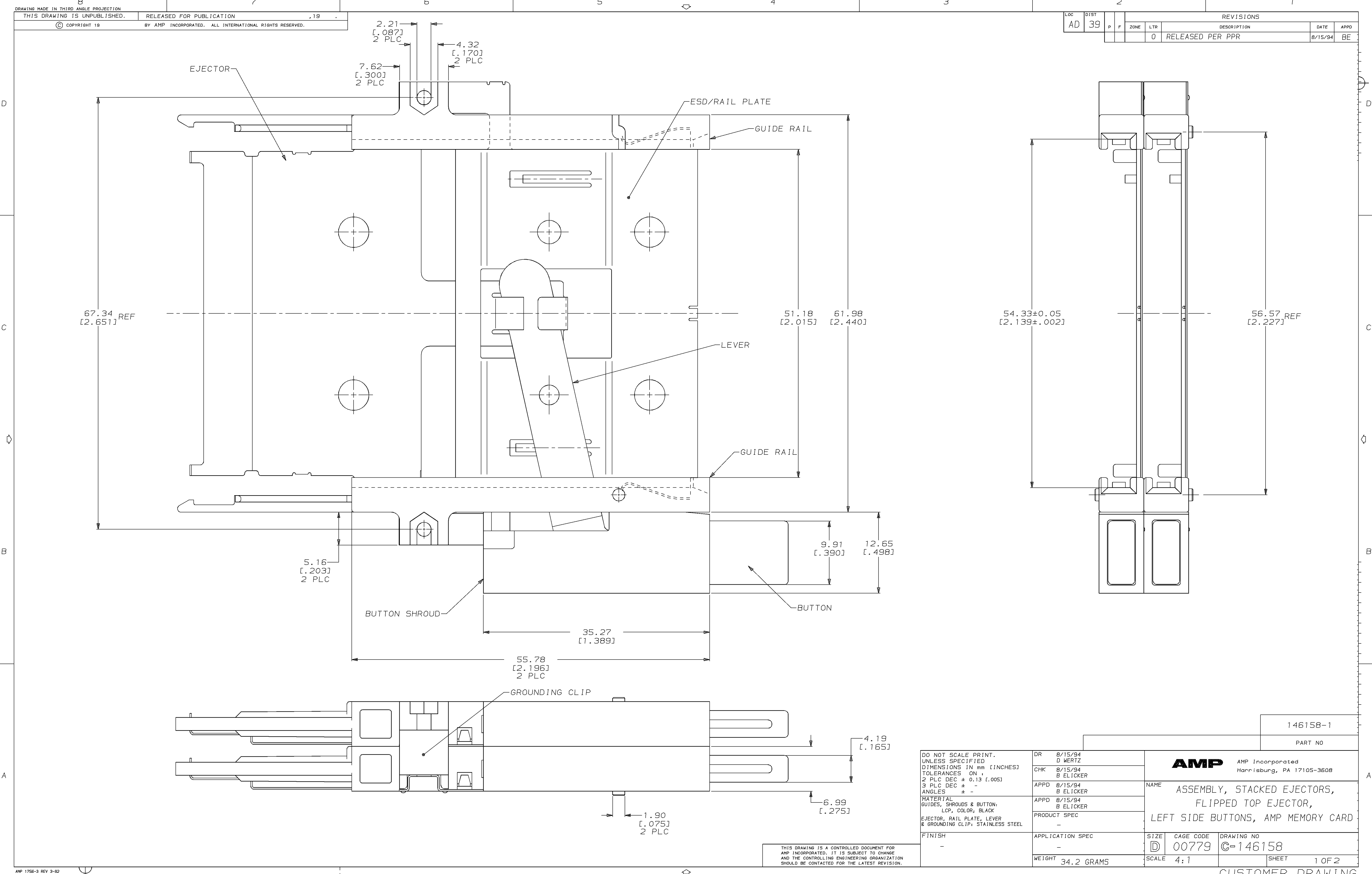


LOC		DIST		P		F		ZONE		LTR		REVISIONS			
AD	39											DESCRIPTION	DATE	APPD	
												0	RELEASED PER PPR	8/15/94	BE



THIS DRAWING IS A CONTROLLED DOCUMENT FOR AMP INCORPORATED. IT IS SUBJECT TO CHANGE AND THE CONTROLLING ENGINEERING ORGANIZATION SHOULD BE CONTACTED FOR THE LATEST REVISION.

DO NOT SCALE PRINT.  
 UNLESS SPECIFIED  
 DIMENSIONS IN mm [INCHES]  
 TOLERANCES ON:  
 2 PLC DEC ± 0.13 [.005]  
 3 PLC DEC ± -  
 ANGLES ± -  
 MATERIAL  
 GUIDES, SHROUDS & BUTTON:  
 LCP, COLOR, BLACK  
 EJECTOR, RAIL PLATE, LEVER  
 & GROUNDING CLIP: STAINLESS STEEL  
 FINISH -

DR	8/15/94 D WERTZ
CHK	8/15/94 B ELICKER
APPD	8/15/94 B ELICKER
APPD	8/15/94 B ELICKER
PRODUCT SPEC	-
APPLICATION SPEC	-
WEIGHT	34.2 GRAMS

146158-1		
PART NO		
AMP Incorporated Harrisburg, PA 17105-3608		
NAME		
ASSEMBLY, STACKED EJECTORS, FLIPPED TOP EJECTOR, LEFT SIDE BUTTONS, AMP MEMORY CARD		
SIZE	CAGE CODE	DRAWING NO
D	00779	C-146158
SCALE	4:1	SHEET
		1 OF 2

CUSTOMER DRAWING

